

**ADDENDUM NUMBER 2:
ACCESS ROADWAY NEW HAMPSHIRE
COOPERATIVE RECYCLING FACILITY
CONTRACT DOCUMENTS AND TECHNICAL SPECIFICATIONS**

**Issued: October 18, 2011
For Bids Due: October 26, 2011**

A. GENERAL

1. See attached sign in sheet for the Pre-Bid Conference.
2. Bidders requested provision of PDF Drawings at the Pre-Bid Conferences.
PDFs of the Drawings and Specs are not being provided by the Owner and may be purchased and downloaded from Infinite Imaging.
3. Utility poles and light fixtures will be installed by Unitil.
4. Right-of-way bounds will be set by the Owner prior to construction.

B. BIDDING DOCUMENTS

1. Instructions to Bidders

- a. *Revise the construction start time in Item 1 to be on or before March 12, 2012.*
- b. *Revise the 2nd Sentence of Item 9 Withdrawl of Proposals to Read as Follows:*

All bids shall be valid for a period of one hundred twenty (120) days from the date of the submission of the bid, and no bid may be withdrawn in whole or in part during that period.

C. TECHNICAL SPECIFICATIONS

1. Section 001500 Measurement and Payment

- a. *Add the Following Sentence to Item 7 Payment:*
Payment for this item shall include up to 500 cubic feet of pressure grout to repair of existing sinkholes above the pipe.

2. Section 022900 Backfill and Compaction

- a. *Revise Part 1.3 A to Read as Follows:*

A. Soil testing and compaction tests shall be performed by an independent testing lab under contract with the Engineer and paid for by the Owner.

b. *Revise Part 1.4 B and C to Read as Follows:*

B. The Contractor shall provide samples of fill materials to the Construction Quality Assurance (CQA) Inspector for laboratory testing and approval at least seven days before any of the materials is brought to the site, and additional samples for each additional 2,000 cubic yards brought to the site.

C. In-place density testing will be completed by the CQA Inspector at the frequency specified in Part 1.3 D. Engineer and Contractor shall coordinate with the CQA Inspector for completion of the testing.

D. CONSTRUCTION DRAWINGS

1. Drawing R-4

a. *Replace Existing Drawing with Drawing Revised Per Addendum No. 2 to indicate Contractor is to complete the water line adjustment, hydrant, and 8" water service and 6" sewer service lateral for the Recycling Facility to the limit of the Right-of-Way .*

2. Drawing R-10

a. *Replace Existing Drawing with the Drawing Revised per Addendum No. 2 to add Hydrant and Sewer Drop Manhole Details.*

END OF ADDENDUM NO. 2

PRE-BID CONFERENCE

NH Cooperative Recycling Facility
 Wednesday, October 12, 2011 at 10:00 AM

	Company Name	Representative	Phone/Fax E-mail
	Riess Construction	Pat Riess	603-536-7156 FAX 7157 pat@riessconst.com
	Piquette & Hussey Electric	David Doyle	603-382-3182 david.doyle@PHelectric.net
	MERIDIAN CONST CORP	TIM LOWE	527-0101 TIM@MERIDIANNH.COM
	Ricci Construction	Butch Ricci	P 4363112 F 603 4363935 bricci@ricci-construction.com
	DBU construction	Dave Fraser	P 736-9100 F 736-9101 Dfraser@DBU-CONSTRUCTION.COM
	HILTZ CONST INC	Rusty Smith	603-968-3262
	DANIEL LADD SITEWORK	Jeff Brissette	603 235 3756 Ladd Excavation @GMAIL.COM
	SARGENT Corp.	Steve Perry	207-927-4435 sperry@sargent-corp.com

PRE-BID CONFERENCE

NH Cooperative Recycling Facility
 Wednesday, October 12, 2011 at 10:00 AM

	Company Name	Representative	Phone/Fax E-mail
	Torply Corp + Dan	W. Torply	603 924 3003 P - 9521 F btorply e torplycorp@windn.com
	Associated Construction 1010 Westfield Ave Hartford, CT 06114	Jim Martucci	(860) 296-4114 FAX (860) 296-7206 JMM@accqc.com
	Interstate Electrical Services	Jared Treshinsky	603 627 3230 JTreshinsky@IESS1.com
	T-Buck Construction	John Steele Mark McHeterell	Mark@thudcon.net FAX 703-6230 703-6223 ext 203
	Sheridan	Jim Anderson	207-774-6138 janderson@sheridancorp.com
	TPD Construction	Tim Dumont	207-490-5900 Tim@tpdconstruction.com
	NORTH BRANCH CONST	ERIK HASTINGS	224-3233 EHASTINGS@NORTHBRANCH.NET
	ECKMAN CONSTRUCTION	ARON RAVENELLE	623-1713x224 rav@eckmanconstruction.com
	Gordon Const. Inc. 5th South St. Beverly H.	Vern Gordon	603-224-1495 bytheyd@comcast.net

PRE-BID CONFERENCE

Access Roadway - NH Cooperative Recycling Facility

Wednesday, October 12, 2011 at 10:45 AM

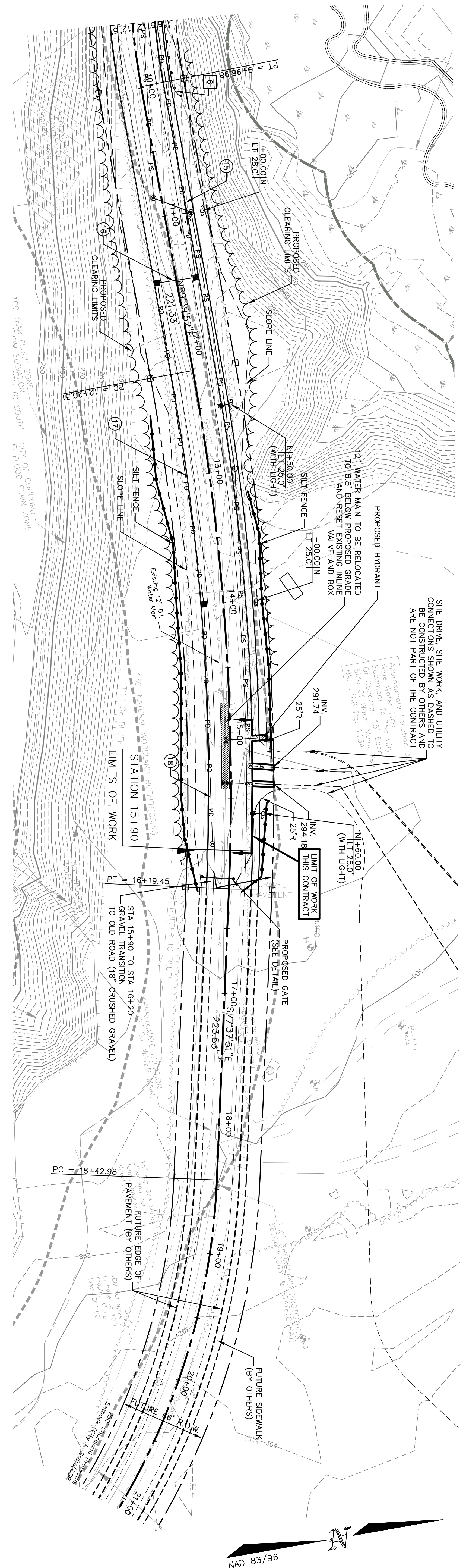
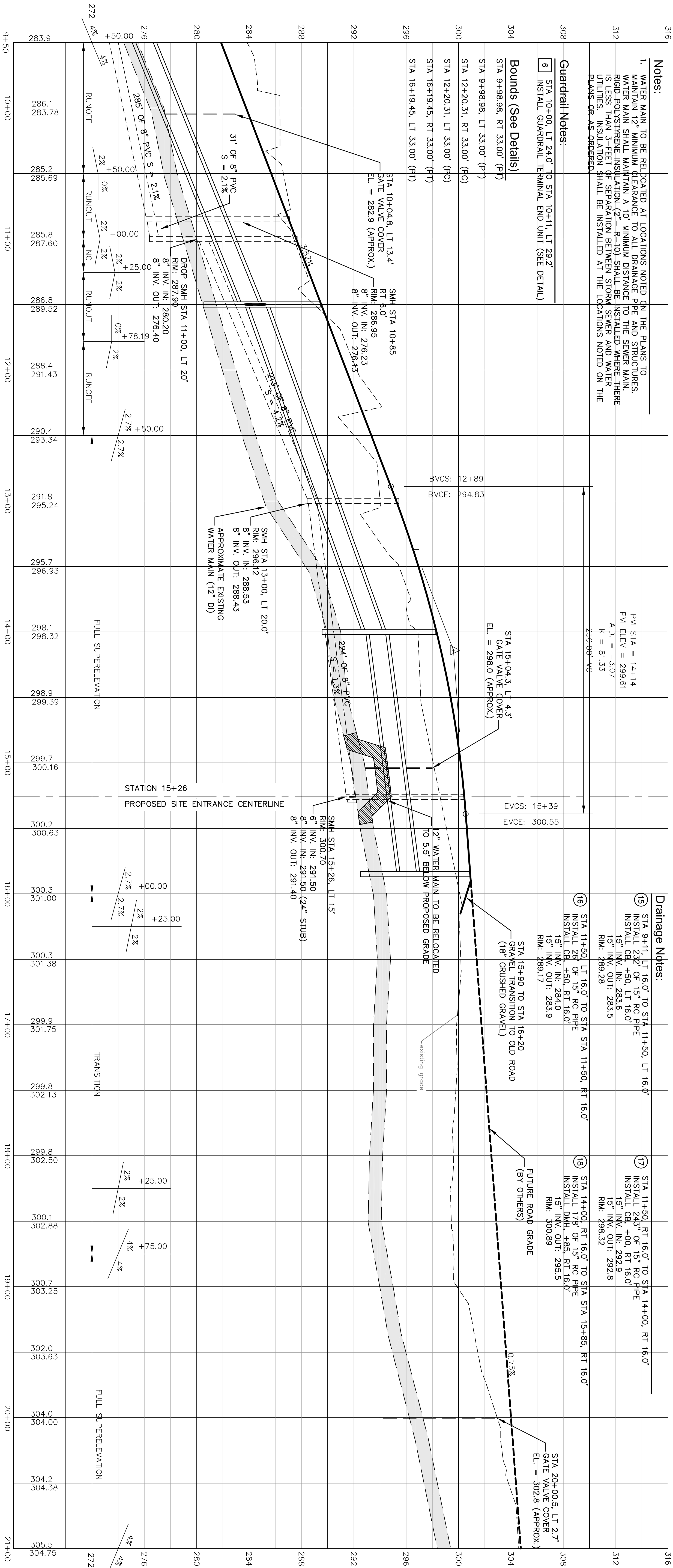
	Company Name	Representative	Phone/Fax E-mail
	J. Parker & Daughters Inc	Denise Parker	603 435-6750 Ph 435-7620 FAX parker1@metrocast.net
	SARGENT CORPORATION	Steve Sperry	201-827-4435 201-827-3148 sperry@sargent-corp.com
	CHARTER ENVIRONMENTAL	CHRIS RYAN	857-246-6800 CRYAN@CHARTERENVIRONMENTAL.COM
	Weaver Bros. Const. Co. Inc	Adam Bates	228-8631 abates@wbcc.biz
	Weaver Bros. Const.	Brian Good	(603)228-8631 Phone (603)228-5375 Fax bgood@wbcc.biz
	R. D. EDMUNDS & Sons	Ron Butka	603-934-4869 ROBIN@METROCAST.NET
	R.S. AUDLEY	FRANK KENISON	224-7724 PH 225-7614 FAX
	John H Lyman	Jack Lyman	524 4314 527 0897
	AMERICAN EXCAVATING	STEVE CASSAMASSINO	735-1082 STEVE@AMERICANEXCAVATING.COM

PRE-BID CONFERENCE

Access Roadway - NH Cooperative Recycling Facility

Wednesday, October 12, 2011 at 10:45 AM

	Company Name	Representative	Phone/Fax E-mail
	T-Buck Construction	Mark McPheters	783-6223 FAX 783-6230
	SARGENT Corporation Steve Perry	Steve Perry	207-827-4435 207-827-3148
	Weaver Bros Const. Co. Inc	Briain Good	(603) 228-8631 Phone (603) 228-5375 Fax bgood@wbcc.biz
	Weaver Bros Const co inc	Adam Bates	abates@wbcc.biz
	Ingram Const Corp	Jeff Ingram	jeff@ingram- construction.com
	PM Construction	Laurie Blundhott 267-247-7647	charris@ pmconstruction. com
	CHARTER ENVIRONMENTAL	CHRIS RYAN	857-246-6800 CRYAN@CHARTER ENVIRON MENTAL.COM
	CSSI	Mike Halvitzes	603-518-5124 518-5127 mikae@cssicontractors.com
	ESTES & GALLUP	TIM ESTES	603 795-4400 TIM@ESTES-GALLUP.COM



Notes:
 1. WATER MAIN TO BE RELOCATED AT LOCATIONS NOTED ON THE PLANS TO MAINTAIN 12" MINIMUM CLEARANCE TO ALL DRAINAGE PIPE AND STRUCTURES. WATER MAIN SHALL MAINTAIN A 10' MINIMUM DISTANCE TO THE SEWER MAIN. RIGID POLYSTYRENE INSULATION (2" - R-10) SHALL BE INSTALLED WHERE THERE IS LESS THAN 3'-FEET OF SEPARATION BETWEEN STORM SEWER AND WATER UTILITIES. INSULATION SHALL BE INSTALLED AT THE LOCATIONS NOTED ON THE PLANS OR AS ORDERED.

Guardrail Notes:
 6. STA 10+00, LT 24.0' TO STA 10+11, LT 29.2' INSTALL GUARDRAIL TERMINAL END UNIT (SEE DETAIL).

Bounds (See Details)

STA 9+98.98, RT 33.00' (P)

STA 9+98.98, LT 33.00' (P)

STA 12+20.31, RT 33.00' (P)

STA 12+20.31, LT 33.00' (P)

STA 16+19.45, RT 33.00' (P)

STA 16+19.45, LT 33.00' (P)

STA 10+04.8, LT 13.4' GATE VALVE COVER
 EL. = 282.9 (APPROX.)

SMH STA 10+85
 RT 6.0'
 RIM: 286.95
 8" INV. IN: 276.23
 8" INV. OUT: 276.43

SMH STA 13+00, LT 20.0'
 RIM: 296.12
 8" INV. IN: 288.53
 8" INV. OUT: 288.43

SMH STA 15+26, LT 15.1'
 RIM: 300.70
 8" INV. IN: 291.50
 8" INV. OUT: 291.40

STA 15+04.3, LT 4.3' GATE VALVE COVER
 EL. = 298.0 (APPROX.)

STA 11+50, LT 16.0' TO STA 11+50, RT 16.0'
 INSTALL 24" OF 15" RC PIPE
 15" INV. IN: 284.0
 15" INV. OUT: 283.9
 RIM: 289.17

STA 11+50, LT 16.0' TO STA 11+50, RT 16.0'
 INSTALL 24" OF 15" RC PIPE
 15" INV. IN: 284.0
 15" INV. OUT: 283.9
 RIM: 289.17

STA 14+00, RT 18.0' TO STA 14+00, RT 18.0'
 INSTALL 24" OF 15" RC PIPE
 15" INV. IN: 295.5
 15" INV. OUT: 295.5
 RIM: 300.89

STA 20+00.5, LT 2.7' GATE VALVE COVER
 EL. = 302.8 (APPROX.)

STA 9+11, LT 16.0' TO STA 11+90, LT 16.0'
 INSTALL 232' OF 15" RC PIPE
 15" INV. IN: 283.6
 15" INV. OUT: 283.5
 RIM: 289.28

STA 11+50, RT 16.0' TO STA 14+00, RT 16.0'
 INSTALL 243' OF 15" RC PIPE
 15" INV. IN: 292.9
 15" INV. OUT: 292.8
 RIM: 298.32

STA 14+00, RT 18.0' TO STA 14+00, RT 18.0'
 INSTALL 243' OF 15" RC PIPE
 15" INV. IN: 292.9
 15" INV. OUT: 292.8
 RIM: 298.32

STA 14+00, RT 18.0' TO STA 14+00, RT 18.0'
 INSTALL 243' OF 15" RC PIPE
 15" INV. IN: 292.9
 15" INV. OUT: 292.8
 RIM: 298.32

STA 14+00, RT 18.0' TO STA 14+00, RT 18.0'
 INSTALL 243' OF 15" RC PIPE
 15" INV. IN: 292.9
 15" INV. OUT: 292.8
 RIM: 298.32

STA 14+00, RT 18.0' TO STA 14+00, RT 18.0'
 INSTALL 243' OF 15" RC PIPE
 15" INV. IN: 292.9
 15" INV. OUT: 292.8
 RIM: 298.32

STA 14+00, RT 18.0' TO STA 14+00, RT 18.0'
 INSTALL 243' OF 15" RC PIPE
 15" INV. IN: 292.9
 15" INV. OUT: 292.8
 RIM: 298.32

STA 14+00, RT 18.0' TO STA 14+00, RT 18.0'
 INSTALL 243' OF 15" RC PIPE
 15" INV. IN: 292.9
 15" INV. OUT: 292.8
 RIM: 298.32

STA 14+00, RT 18.0' TO STA 14+00, RT 18.0'
 INSTALL 243' OF 15" RC PIPE
 15" INV. IN: 292.9
 15" INV. OUT: 292.8
 RIM: 298.32

STA 14+00, RT 18.0' TO STA 14+00, RT 18.0'
 INSTALL 243' OF 15" RC PIPE
 15" INV. IN: 292.9
 15" INV. OUT: 292.8
 RIM: 298.32

STA 14+00, RT 18.0' TO STA 14+00, RT 18.0'
 INSTALL 243' OF 15" RC PIPE
 15" INV. IN: 292.9
 15" INV. OUT: 292.8
 RIM: 298.32

STA 14+00, RT 18.0' TO STA 14+00, RT 18.0'
 INSTALL 243' OF 15" RC PIPE
 15" INV. IN: 292.9
 15" INV. OUT: 292.8
 RIM: 298.32

STA 14+00, RT 18.0' TO STA 14+00, RT 18.0'
 INSTALL 243' OF 15" RC PIPE
 15" INV. IN: 292.9
 15" INV. OUT: 292.8
 RIM: 298.32

STA 14+00, RT 18.0' TO STA 14+00, RT 18.0'
 INSTALL 243' OF 15" RC PIPE
 15" INV. IN: 292.9
 15" INV. OUT: 292.8
 RIM: 298.32

STA 14+00, RT 18.0' TO STA 14+00, RT 18.0'
 INSTALL 243' OF 15" RC PIPE
 15" INV. IN: 292.9
 15" INV. OUT: 292.8
 RIM: 298.32

no.	revision	date	by
1	Revised per Addendum #2	10/18/11	JSM

CMA ENGINEERS
 CIVIL/ENVIRONMENTAL ENGINEERS

35 Bow Street
 Portsmouth, NH 603/431-6196

55 So. Commercial Street
 Manchester, NH 603/627-0708

Lafayette Center
 Storer Street Building,
 Suite 208
 Kennebunk, ME 207/985-8177

info@cmaengineers.com www.cmaengineers.com

date: September 2011
 project no: 660
 file name: 660oc-R-PlanREV1.dwg

designed by: JWJ
 drawn by: JWJ
 approved by: RDL/PDS

scale: 1" = 40'

CRSW/RRC
 347-B Village Street, Penacook, NH 03303

New Hampshire Cooperative Recycling Facility
 Access Roadway Construction Drawings

Plan and Profile
 Station 9+50 to Station 21+00

Sheet: 6 of 16
 Drawing no. R-4

